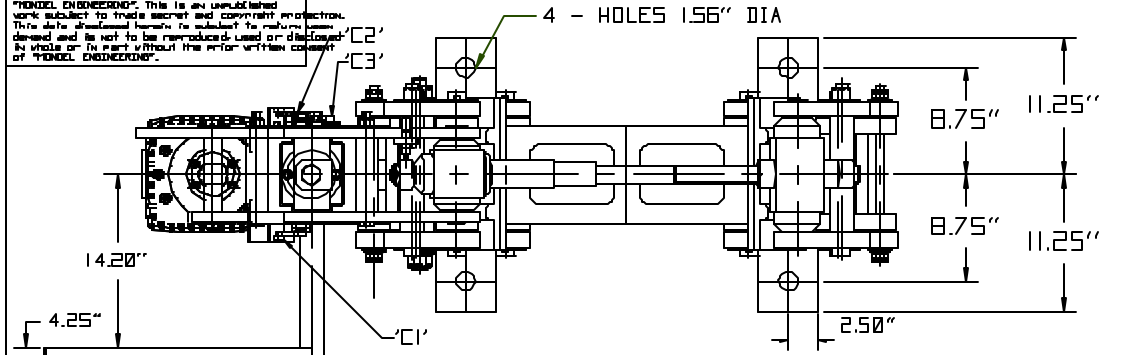
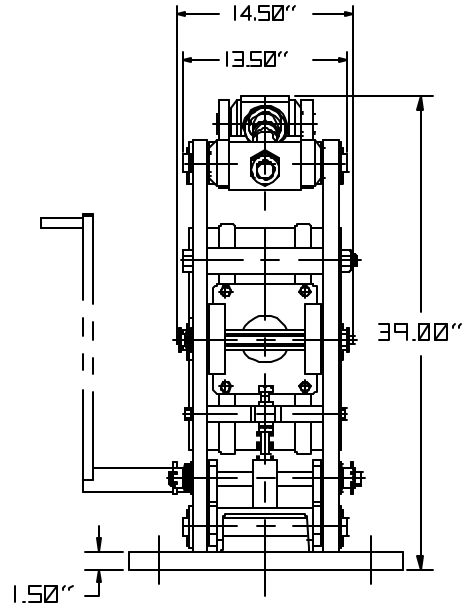
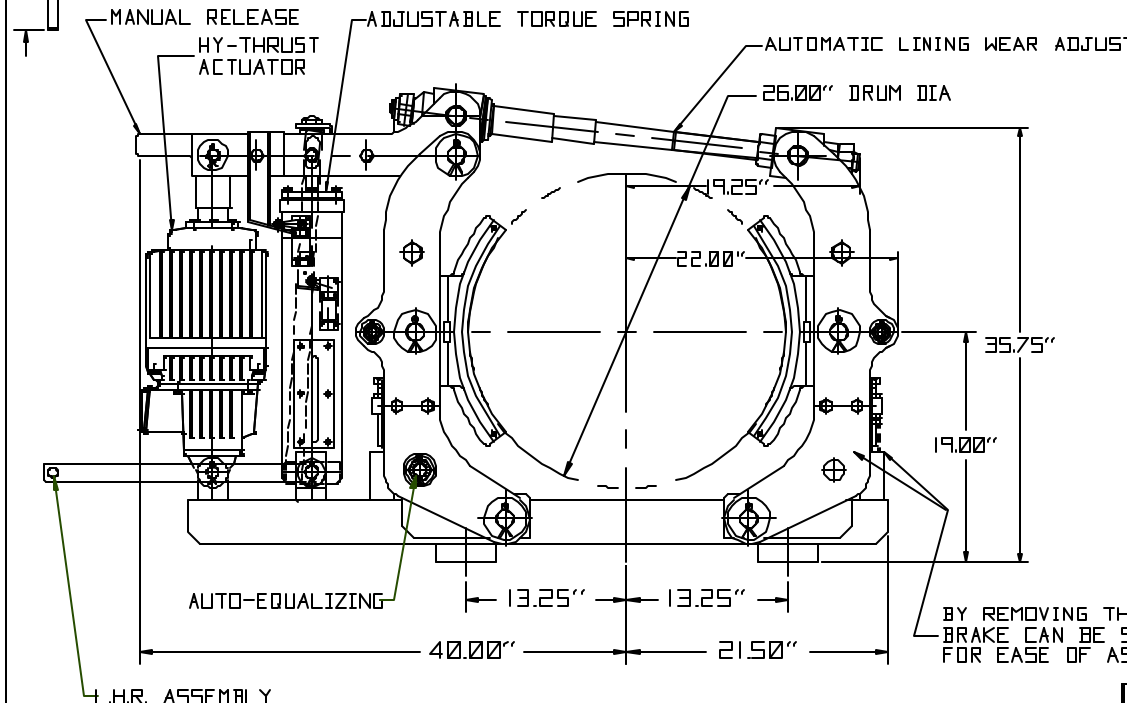


This document is the confidential property of MONDEL ENGINEERING. This is an unclassified work subject to trade secret and copyright protection. This data should not be subject to release, dissemination and is not to be reproduced, loaned or disclosed in whole or in part without the written consent of MONDEL ENGINEERING.

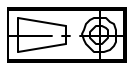


LIMIT SWITCHES:
 'C1' = BRAKE RELEASE
 'C2' = BRAKE NOT RELEASE
 'C3' = LATCHING RELEASE



BY REMOVING THIS BLOCK & LINKS THE BRAKE CAN BE SLID UNDER THE WHEEL FOR EASE OF ASSEMBLY

NOTE:
 APPROX WEIGHT = 1200 LBS
 MAX TORQUE WITH Ed301/6 THRUSTER = 6000 LBS-FT



DECIMAL PLACE	
(1) PLACE 0.05	± 0.0025"
(2) PLACE 0.00	± 0.001"
(3) PLACE 0.000	± 0.0005"
(4) PLACE 0.0000	± 0.0001"

EXCEPTIONS:
 Ⓞ TOLERANCE BELOW 0.005" TO BE SHOWN TO UPPER AND LOWER LIMIT.
 Ⓢ ∇ INDICATES USE OF DECIMAL PLACE TOLERANCE OTHER THAN INDICATED BY ORIGINAL DECIMAL DIMENSION.
 AS 0.005" - (USE ONE DECIMAL PLACE TOL.)

GENERAL TOLERANCES NOTES

NO.	REVISION	BY	DATE
MEL MONDEL ENGINEERING			
TITLE: 26" MBTJF/E Ed301/6 (AAE) (3LS) (LHR) SHOE BRAKE (OUTLINE DWG.)			
DRAWN: R.V	DATE: NOV. 11/02	DRAWING NO.	REV. NO.
CHECKED: R.B.	DATE: NOV. 11/02	902591	0
APPR'D: I	SCALE: N.T.S.	SHEET 1 OF 1	ASS'Y:

MAX TORQUE WITH Ed201/6 THRUSTER = 4650 LBS-FT

FROM 902293