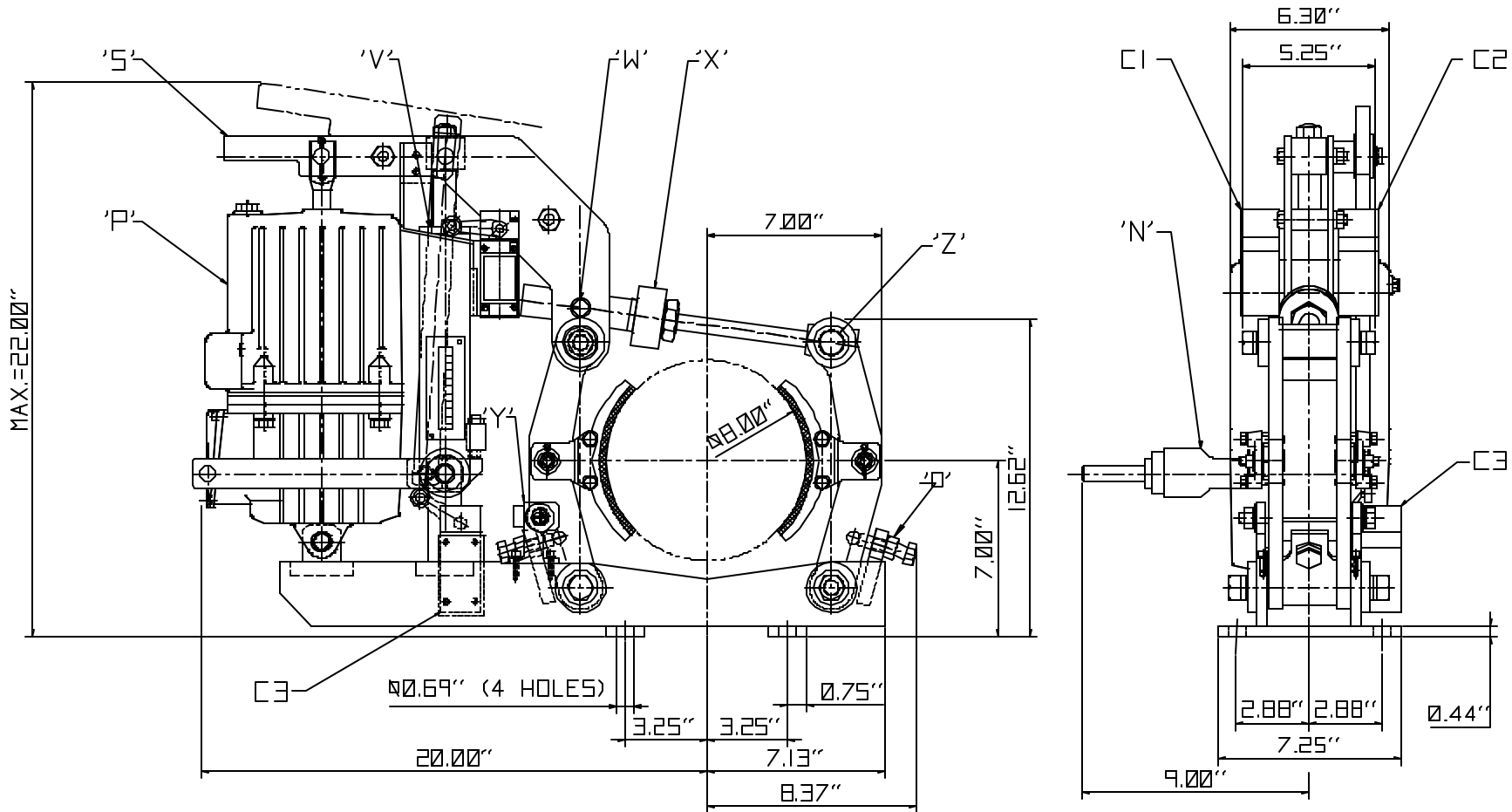


This document is the confidential property of "MONDEL ENGINEERING LTD.". This is an unpublished work subject to trade secret and copyright protection. This data disclosed herein is subject to return upon demand and is not to be reproduced, used or disclosed in whole or in part without the prior written consent of "MONDEL ENGINEERING LTD."

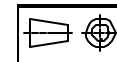


- 'N' = S-LATCHING HAND RELEASE
- 'D' = SHIPPING BOLTS(SEE NOTE BELOW)
- 'P' = HY-THRUST ACTUATOR (Ed30/55)
- 'S' = MANUAL RELEASE LEVER
- 'V' = EXTERNAL TORQUE SPRING
- 'W' = SELF LUBRICATING BUSHINGS
- 'X' = AUTO ADJUSTMENT MECHANISM
- 'Y' = AUTO-EQUALIZING ASSEMBLY
- 'Z' = SPECIAL BEARING ON MAIN PIVOT POINTS

LIMIT SWITCHES

- 'C1' = BRAKE RELEASE
- 'C2' = BRAKE SET
- 'C3' = LATCHING RELEASE

NOTE:
DISCARD SHIPPING BOLTS PRIOR TO INSTALLATION



NO.	REVISION	BY	DATE
MEL MONDEL ENGINEERING LTD.			
TITLE: 8" MBTJ/E Ed30/55 (AAE)(S-LHR)(3LS) SHOE BRAKE OUTLINE			
DRAWN: R.B.	DATE: MAY 17/20	DWG NO.	902341
CHECKED: R.B.	DATE: MAY 17/20	APP'D:	
SCALE: N.T.S.	SHEET: 1	OF: 1	8" MBTJ/E-Ed30/55