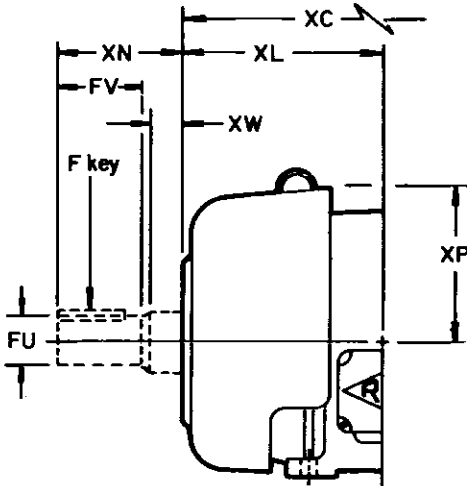


see reverse side
for 32U frames
& larger



TEFC ONLY

STANDARD APPLICATION

REULAND MOTOR
FOOT MOUNTED - SQUIRREL CAGE
TYPE - A000
STYLE -

	SHAFT EXTENSION	DRIP PROOF	TENV	TEFC
	SINGLE END	AVO	AEO	AFO
	DOUBLE END	AVS	AES	AFS
(1)	SINGLE END	DVO	DEO	DFO
(1)	DOUBLE END	DVS	DES	DFS

(1) DUOCENTRIC ROTOR

FEET TO SHAFT CENTERLINE +.000-.031

SHAFT TOLERANCES		
DESCRIPTION	1.6250 DIA & UNDER	OVER 1.625 DIA
SHAFT RUNOUT	.002 TIR	.003 TIR
SHAFT DIAMETER	+0000 -0005	+000 -001

eyebolts furnished on frames 254U & larger

FRAME	A	B	C	D	E	F	G	H	L	M	N	O	P	U	key	V	W
182	9.00	5.75	12.12	4.50	3.75	2.25	.50	13/32	4.88	4.88	2.38	9.00	9.00	.8750	3/16	2.00	.12
184		6.75	13.12			2.75			5.38	5.38							
213		8.25	15.38			3.50			6.12	6.12							
215	10.50	8.25	16.88	5.25	4.25	3.50	.62	17/32	6.88	6.88	3.12	10.38	10.25	1.1250	1/4	2.75	.25
254U		10.00	20.25			4.12			8.12	8.12							
256U	12.50	11.75	22.00	6.25	5.00	5.00	.75	17/32	9.00	9.00	4.00	12.38	12.25	1.3750	5/16	3.50	.19
284U		11.25	23.69			4.75			9.31	9.31							
286U		13.00	25.19			5.50			10.06	10.06							

FRAME	AA	AB	AC	AF	BA	FBA	FN	FU	F key	FV	FW	XC	XL	XN	XP	XW
182	.75	7.06	5.75	1.94	2.75	2.75	2.38	.8750	3/16	2.00	.12	13.81	6.56	3.12	5.00	.88
184		7.94	6.56		3.50	3.50	3.12	1.1250	1/4	2.75		14.81	7.06	3.88	5.88	
213		7.94	6.56		3.50	3.50	3.12	1.1250	1/4	2.75		16.56	7.31	3.88	5.88	
215	1.00	7.94	6.56	2.75	4.25	4.25	4.00	1.3750	5/16	3.50	.25	18.06	8.06	4.81	6.88	1.06
254U		9.81	7.94		4.25	4.25	4.00	1.3750	5/16	3.50	.25	21.62	9.50	4.81	6.88	1.06
256U	1.25	10.75	8.88	2.75	4.75	4.75	5.06	1.6250	3/8	4.62	.19	23.38	10.38	6.25	7.88	1.38
284U		10.75	8.88		4.75	4.75	5.06	1.6250	3/8	4.62	.19	25.06	10.69	6.25	7.88	1.38
286U		10.75	8.88		4.75	4.75	5.06	1.6250	3/8	4.62	.19	26.56	11.44	6.25	7.88	1.38

REULAND ELECTRIC CO



Industry, Calif

Howell, Mich

replaces

DA-1001

Revised

Added

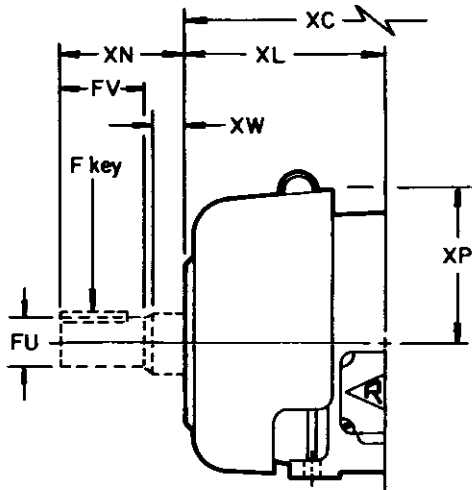
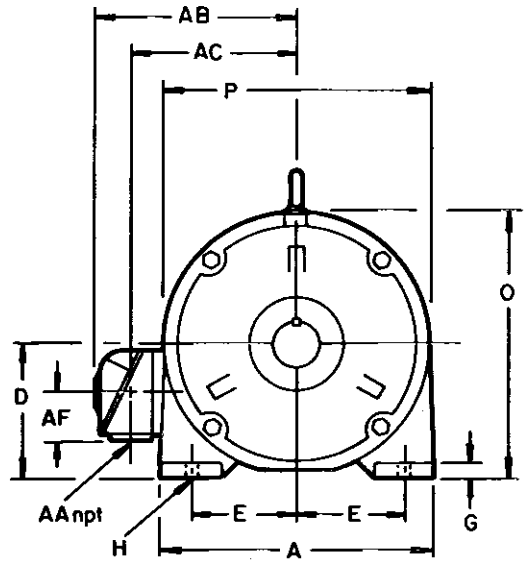
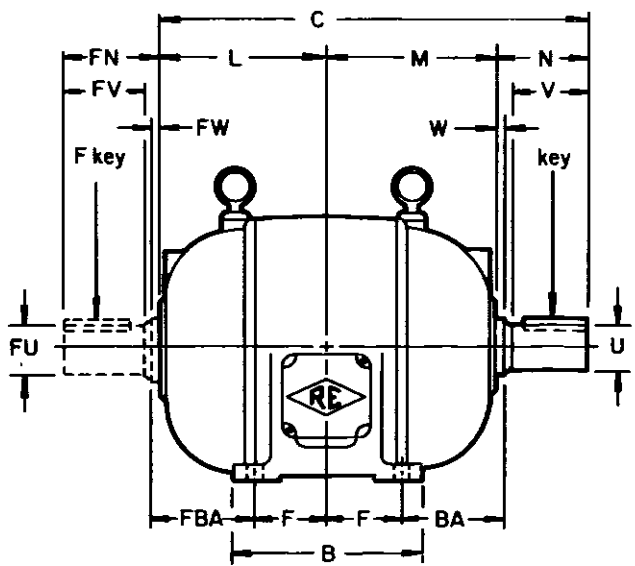
New

7/15/76

dwg no

DA11-3300

(f)



TEFC ONLY

STANDARD APPLICATION

REULAND MOTOR
 FOOT MOUNTED - SQUIRREL CAGE
 TYPE - A000
 STYLE -

	SHAFT EXTENSION	DRIP PROOF	TENV	TEFC
(1)	SINGLE END	AVO	AEO	AFO
(1)	DOUBLE END	AVS	AES	AFS
(1)	SINGLE END	DVO	DEO	DFO
(1)	DOUBLE END	DVS	DES	DFS

(1) DUOCENTRIC ROTOR

FEET TO SHAFT CENTERLINE +.000-.031

SHAFT TOLERANCES		
DESCRIPTION	1.625 DIA & UNDER	OVER 1.625 DIA
SHAFT RUNOUT	.002 TIR	.003 TIR
SHAFT DIAMETER	+.0000 -.0005	+.000 -.001

FRAME	A	B	C	D	E	F	G	H	L	M	N	O	P	U	key	V	W
324U	16.00	12.50	26.38	8.00	6.25	5.25	1.00	2 1/32	10.25	10.25	5.88	15.94	15.88	1.875	1/2	5.38	.25
324S			24.00								3.50			1.6250	3/8	3.00	
326U		14.00	27.88			5.88			1.875	1/2	5.38						
326S			25.50			3.50			1.6250	3/8	3.00						
364U	18.00	14.25	29.12	9.00	7.00	5.62	1.00	2 1/32	11.25	11.25	6.62	17.94	17.88	2.125	1/2	6.12	
364US			26.50								4.00			1.875		3/8	
365U		15.25	30.12			6.62			2.125	1/2	6.12						
365US			27.50			4.00			1.875	3/8	3.50						
365UZ		29.62	6.12	2.375	5/8	5.62											

FRAME	AA	AB	AC	AF	BA	FBA	FN	FU	F key	FV	FW	XC	XL	XN	XP	XW
324U	1.50	12.12	10.00	3.31	5.25	5.25	5.88	1.875	1/2	5.38	25	27.62	11.50	7.00	8.88	1.38
324S							3.50	1.6250	3/8	3.00		25.25		4.62		
326U		13.25	10.94				5.88	1.875	1/2	5.38		29.12		7.00		
326S							3.50	1.6250	3/8	3.00		26.75		4.62		
364U	2.00	14.25	11.94	3.56	5.88	5.88	6.62	2.125	1/2	6.12	25	30.25	12.38	7.94	9.94	1.56
364US							4.00	1.875	3/8	3.50		27.62		5.31		
365U							6.62	2.125	1/2	6.12		31.25		7.94		
365US							4.00	1.875	3/8	3.50		28.62		5.31		
365UZ							6.62	2.125	1/2	6.12		30.75		8.06		1.94

REULAND ELECTRIC CO



Industry, Calif

Howell, Mich

replaces
DA-1001

◆ Revised
● Added
Revision A
1/28/80

dwg no
DA11-3300
(b)