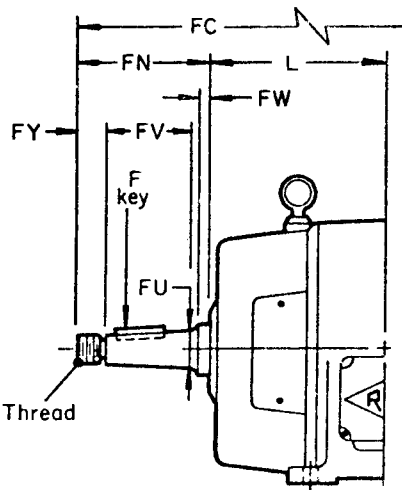


see reverse side
for 32U frames
& larger



NEMA STANDARD TAPERED SHAFT
1 1/4" Taper per foot
Locknut & Washer furnished

eyebolts furnished on 254U & larger

STANDARD APPLICATION

REULAND MOTOR
FOOT MOUNTED — WOUND ROTOR
TYPE — A000

STYLE —	SHAFT EXTENSION	DRIP PROOF	TENV
	SINGLE END	WVO	WEO
	DOUBLE END	WVS	WES
		WVT	WET

FEET TO SHAFT CENTERLINE *000-.031

SHAFT TOLERANCES		
DESCRIPTION	1.625 DIA & UNDER	OVER 1.625 DIA
SHAFT RUNOUT	.002 TIR	.003 TIR
SHAFT DIAMETER	+0.000 -0.005	+0.000 -0.001

FRAME	A	B	C	D	E	F	G	H	L	M	N	O	P	U	key	V	W
182	9.00	5.75	13.75	4.50	3.75	2.25	.50	13/32	6.50	4.88	2.38	9.00	9.00	.8750	3/16	2.00	.12
184		6.75	14.75			2.75			7.00	5.38							
213	10.50	6.75	16.31	5.25	4.25	2.75	.62	17/32	7.06	6.12	3.12	10.38	10.25	1.1250	1/4	2.75	.25
215		8.25	17.81			3.50			7.81	6.88							
254U	12.50	10.00	21.31	6.25	5.00	4.12	.75	17/32	9.19	8.12	4.00	12.38	12.25	1.3750	5/16	3.50	.25
256U		11.75	23.06			5.00			10.06	9.00							
284U	14.38	11.25	24.94	7.00	5.50	4.75	.75	17/32	10.56	9.31	5.06	13.94	13.88	1.6250	3/8	4.62	.19
286U		13.00	26.44			5.50			11.31	10.06							

FRAME	AA	AB	AC	AF	BA	FC	FN	FU	F key	FV	FW	FY	FBA	Thread							
182	.75	7.06	5.75	1.94	2.75	16.50	2.75	.875	3/16	1.75	.12	.75	4.38	5/8-18NF							
184					17.50																
213		19.06																			
215		20.56																			
254U	1.00	9.81	7.94	2.75	4.25	24.94	3.62	1.125	1/4	2.25	.25	.88	5.31	3/4-16NF							
256U					26.69																
284U	1.25	10.75	8.88		4.75	29.25							4.31		1.375	5/16	2.62	.19	1.25	6.00	1"-14
286U					30.75																

REULAND ELECTRIC CO



Industry, Calif

Howell, Mich

replaces

DA-2001

◆ Revised

● Added

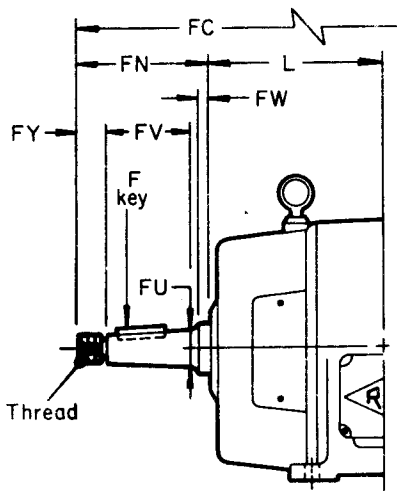
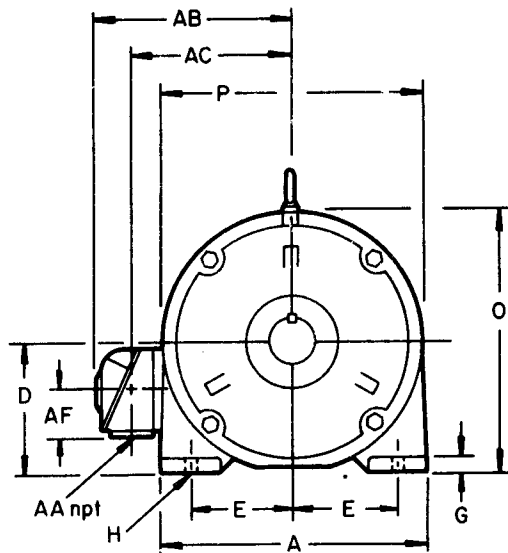
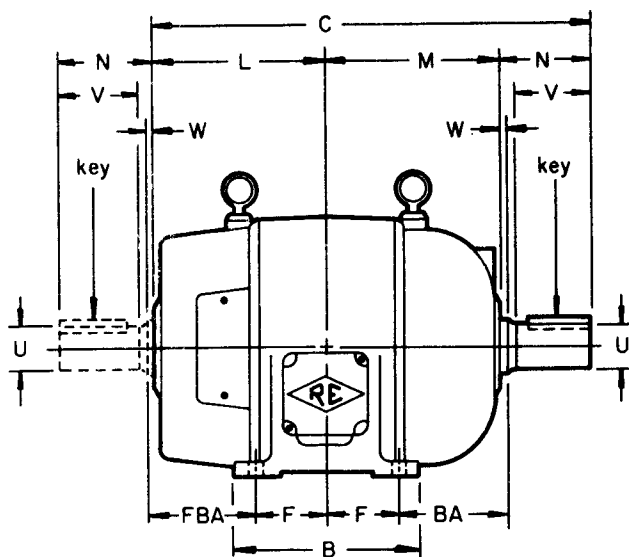
New

6/7/76

dwg no

DA21-3311

(f)



STANDARD APPLICATION

REULAND MOTOR

FOOT MOUNTED - WOUND ROTOR

TYPE - A000

STYLE -

	SHAFT EXTENSION	DRIP PROOF	TENV
SINGLE END		WVO	WEO
DOUBLE END		WVS	WES
		WVT	WET

NEMA STANDARD TAPERED SHAFT

1 1/4" Taper per foot

Locknut & Washer furnished

eyebolts furnished on 254U & larger

FEET TO SHAFT CENTERLINE *000-031

SHAFT TOLERANCES		
DESCRIPTION	1.625 DIA & UNDER	OVER 1.625 DIA
SHAFT RUNOUT	.002 TIR	.003 TIR
SHAFT DIAMETER	+0.000 -0.005	+0.000 -0.001

FRAME	A	B	C	D	E	F	G	H	L	M	N	O	P	U	key	V	W
324U	16.00	12.50	27.62	8.00	6.25	5.25	1.00	21/32	11.50	10.25	5.88	15.94	15.88	1.8750	1/2	5.38	25
326U		14.00	29.12			6.00			12.25	11.00							
324S		12.50	25.25			5.25			11.50	10.25							
326S		14.00	26.75			6.00			12.25	11.00							
364U	18.00	14.25	31.25	9.00	7.00	5.62	1.00	21/32	13.38	11.25	6.62	17.94	17.88	2.1250	1/2	6.12	25
365U		15.25	32.25			6.12			13.88	11.75							
364US		14.25	28.62			5.62			13.38	11.25							
365US		15.25	29.69			6.12			13.88	11.75							

FRAME	AA	AB	AC	AF	BA	FC	FN	FU	F key	FV	FW	FY	FBA	Thread
324U	2.00	13.25	13.25	3.56	5.25	32.38	4.75	1.625	3/8	2.88	.25	1.25	6.50	1"-14
326U						33.88								
324S						30.00								
326S						31.50								
364U	2.00	14.25	11.94	3.56	5.88	36.25	5.00	1.875	1/2	3.12	.25	1.25	8.50	1 1/4-12
365U						37.25								
364US						33.62								
365US						34.62								

REULAND ELECTRIC CO



Industry, Calif

Howell, Mich

replaces

DA-2001

◆ Revised

● Added

New

6/7/76

dwg no

DA21-3311

(b)